



125 Years of Service

# Ross Valley Sanitary District

## General Manager's Monthly Bulletin

September 2024



*Beautiful View of Corte Madera Creek Pier.*

As we wrap up September, the District continues to uphold its commitment to providing exceptional service to Marin County. This month's bulletin highlights our collaborative efforts with partners to safeguard our infrastructure and the environment. Additionally, we report on our ongoing manhole rehabilitation and our prompt responses to smart cover alarms, which help prevent sewer spills. We remain committed to enhancing our sewer management efforts while delivering high-quality service to our community and promoting a cleaner, healthier environment.

Our headquarters are located at 1111 Andersen Drive in San Rafael. As always, the RVSD public lobby is open Monday through Friday from 7:30 a.m. to Noon and 1 p.m. to 4 p.m. Our dedicated staff is here to assist you via phone, email or in person.

Remember, if you see a public sewer emergency such as a manhole overflow, leaking pipe, or sewage on the ground, ***please call the RVSD Emergency Line 24/7 at 415-259-2949 as soon as possible.***

## Accomplishments

### Manhole Rehabilitation Efforts

Our staff recently completed nine manhole rehabilitations within the District's service area. This crucial rehabilitation work ensures a free-flowing system by addressing issues such as rough or misaligned channels and failing bases or rim and covers, which can lead to debris and infiltration entering the collection system, and create blockages, potentially causing spills. In addition, when rims and covers become misaligned, they can create unwanted noise for the neighborhood.

New manhole installations enhance access for maintenance to difficult infrastructure, ensuring that our team can effectively manage and maintain the system. The repairs were conducted in various locations, including Greenbrae, Larkspur, Fairfax, Bon Air, Kent Woodlands, and San Anselmo. We appreciate the hard work of our staff in keeping our systems running smoothly and efficiently!



*Newly Rehabilitated Manhole.*

---

## Smart Cover Monitoring Response

In August, our maintenance crew responded to three Smart Cover alarms across the District service area. All three alarms required immediate attention and maintenance which if not monitored by the Smart Cover system, would have led to sewer spills.

“Smart covers” are manhole covers with sensors and alarms attached on their under-side that monitor conditions such as water levels and flow rates in real-time. The alarms alert our team to potential issues, enabling quick responses to prevent overflows and blockages.

Two of the alarms were due to grease buildup, while the third was caused by rocks and debris restricting normal flow at a location previously affected by a spill. Our maintenance team continues to rely on the Smart Cover monitoring system to effectively reduce the risk of spills from our infrastructure, ensuring the integrity of our wastewater management.



*Old RVSD Manhole with Smart Cover.*

---

## Collaborative Efforts on Flood Risk Management Project

The Marin County Flood Control and Water Conservation District will host an informational open house next month about an ongoing Flood Risk Management project located in the lower Ross Valley. Modifications to a 50-plus-year-old concrete channel are designed to make improvements and enhance the functionality of



The project area starts at Lagunitas Road in Ross and ends downstream at the channel in Kentfield. The improvements will help reduce flood risks for residents and businesses in Ross, Kentfield, and Larkspur, while also improving fish passage and habitat.

RVSD is proud to collaborate and partner with the Friends of Corte Madera Creek Watershed, a community organization dedicated to enhancing environmental restoration efforts along the creek. As part of the project, there will be modifications to the area near the multi-purpose pathway, which may result in a slight reduction of turnaround space for RVSD vehicles that service our largest pump station (PS15 – Kentfield).

This collaboration reflects our commitment to safeguarding both our infrastructure and the environment for the benefit of the entire community. More information on the upcoming open house and the project can be found [here](#).



*Various Bird Species Enjoying Corte Madera Creek.*

---

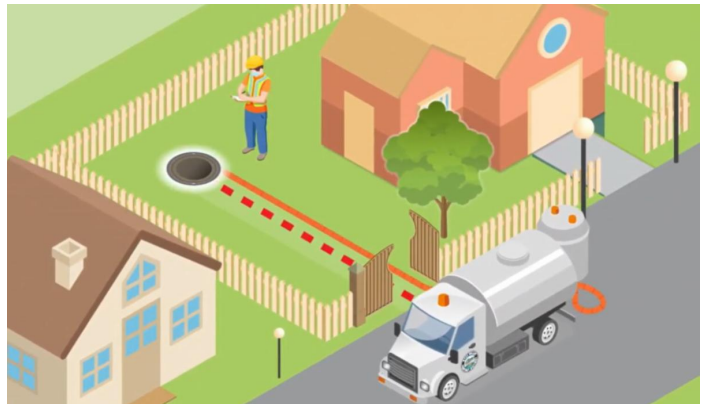
## Easement Access – Ensuring Access for Effective Wastewater Management

A significant portion of our community's public sewer system traverses through utility easements located on private properties. Accessing these easements is crucial for the maintenance and operation of our wastewater infrastructure, yet obstructions can often pose challenges.

To ensure the seamless functioning of essential sewer infrastructure, it's vital that property owners provide clear access to RVSD staff. Some ways customers can help keep our easements clear include avoiding planting trees or placing objects on manhole lids, not building structures over them, and notifying RVSD if installing a fence or gate that restricts access.

This cooperation not only facilitates necessary maintenance but also plays a key role in safeguarding public health and protecting our environment. We appreciate the collaboration of property owners in maintaining open access to these areas. Your support helps us uphold the integrity of our community's wastewater system.

For more information about sewer utility easements, including resources and guidelines on access, please visit our webpage [here](#).



*Public Easement on Private Property.*

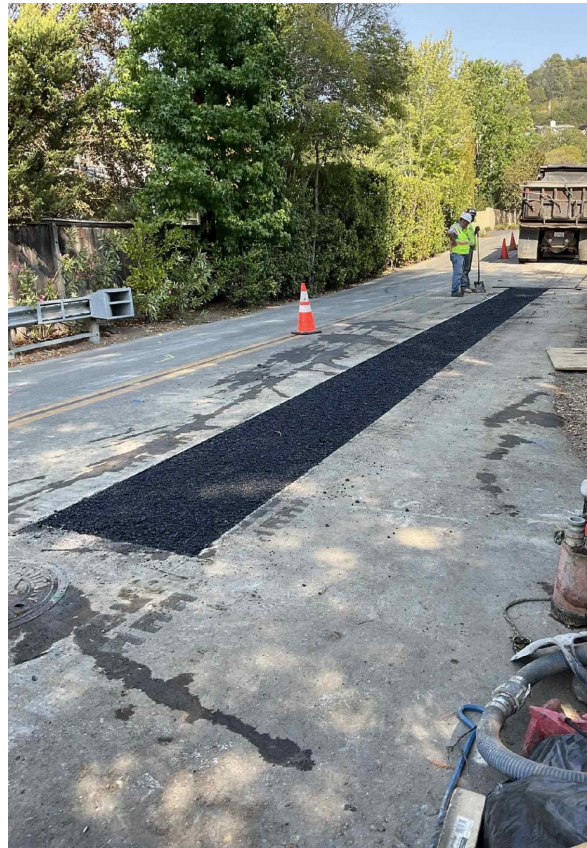
---

# Capital Improvement Program (CIP) Project Updates

## FY 23/24 Gravity Sewer Improvements Project

This capital project is wrapping up with a few punch list items remaining. Pipe replacement is complete for the project. Project completion and close out is expected before the end of the calendar year, pending the completion of the punch list items.

Visit the project [webpage](#) for more information and updates.



*Contractor Completing Paving Restoration.*

---

## Lift Stations 20, 31 & 32 Improvements

Work is ongoing, and the two force main upgrades on Riviera Circle are complete. Delays in procurement of electrical equipment are pushing project completion into the next calendar year. We expect to begin electrical work on LS20 in the coming month.

LS20 is in Larkspur Landing next to East Sir Francis Drake Blvd, and near the northbound 101 on-ramp. LS31 and LS32 are located on Riviera Circle at Via la Brisa and Corte del Bayo, respectively, in the Larkspur Marina neighborhood.

The project will convert the lift stations to submersible pump configurations, saving maintenance and energy costs. The project also includes replacing the two small force mains for the LS31 and LS32 lift stations. New electrical control panels, communications equipment, and flow meters will improve the reliability of the lift stations and allow for faster response times to issues at each station.

Visit the project [webpage](#) for more information and updates.



*Pump Station 20.*

---

Please remember, if you see a public sewer emergency such as a manhole overflow, leaking pipe, or sewage on the ground, **please call the RVSD Emergency Line 24/7 at 415-259-2949 as soon as possible**. When making an emergency call, be prepared to provide your name, phone number, and address where the incident occurs. After-hours calls will route to our on-call staff for immediate assistance.

Sincerely,



Steve Moore, General Manager

## Stay Connected



RVSD is on Nextdoor. Subscribe to our page [here](#) as one of the ways you can find out if there will be construction in your neighborhood.



We are also on LinkedIn! Follow our page [here](#) to stay up to date on current job announcements and other news about the District.

---

## Public Meetings

The Ross Valley Sanitary District Board of Directors conducts monthly public meetings. The public is invited to attend these in-person meetings, held at our new Board Assembly Room:

Ross Valley Sanitary District  
1111 Andersen Drive  
San Rafael, 94901

The public can also attend the meeting remotely from a computer, tablet, or smartphone.

Ross Valley Sanitary District Board Meetings are typically held on the third Wednesday of each month at 5 p.m. For more information, please click [here](#) or contact the District's Board Clerk at 415-259-2949 or [clerk@rvsd.org](mailto:clerk@rvsd.org).

**The next RVSD Regular Board Meeting is scheduled  
for Wednesday, October 16, 2024.**

[Meeting Access](#)


[Agenda Posting](#)

**Want an alert when the next Board Meeting agenda is available?**  
Please write to our [Clerk of the Board](#) to request upcoming agenda alerts.

---

## Sewer FAQs

Review our Frequently Asked Questions (FAQs) that explain sewer overflows, what to do if you see one, and other commonly asked questions about the sewer system.



## Before Hiring a Plumbing Contractor

Check the California Department of Consumer Affairs Contractors State License Board (CSLB) for more information.

Make sure any plumber you hire is familiar with District policies and programs  
for any private property sewer emergency.

[Learn More](#)[Home](#)[Our Projects](#)[Public Education](#)[Contact Us](#)

### Contact Us

#### Phone & Email

[415-259-2949](tel:415-259-2949) (24/7)  
Email: [info@rvsd.org](mailto:info@rvsd.org)

#### Hours

Mon - Fri  
7:30 a.m. - noon  
1 p.m. - 4 p.m.

#### New Address

1111 Andersen Dr  
San Rafael, CA 94901

Ross Valley Sanitary District | 1111 Andersen Drive | San Rafael, CA 94901 US

[Unsubscribe](#) | [Update Profile](#) | [Constant Contact Data Notice](#)



Try email marketing for free today!