

## General Manager's Monthly Bulletin

November 2023



As the autumn leaves continue to fall, the dedicated staff at RVSD is standing strong to help ensure the seamless operation of our wastewater collection system. With early November showers marking the onset of the rainy season, we are geared up for more rain ahead, prioritizing our mission to safeguard public health and the environment.

Please note that effective **December 4, 2023**, you can find us at our new headquarters located at 1111 Andersen Drive in San Rafael. As always, RVSD public lobby office hours are open 7:30 a.m. to noon and 1 p.m. to 4 p.m., Monday through Friday. Our dedicated staff is here to assist you via phone, email or in person.

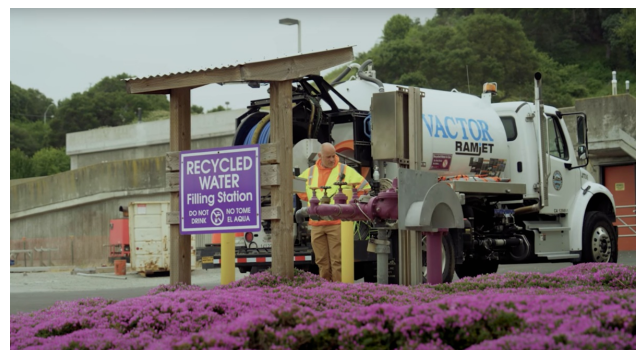
Remember, if you see a public sewer emergency such as a manhole overflow, leaking pipe, or sewage on the ground, **please call the RVSD Emergency Line 24/7 at 415-259-2949 as soon as possible.**

## Accomplishments

### Fine-Tuning Recycled Water for Flushing

Since there is not a recycled wastewater distribution system in or near RVSD, we have to be creative to lower our use of potable (drinkable) water for this essential sewer cleaning activity. Staff recently fine-tuned their approach to keep pipes clean while maximizing recycled water use. The new approach involves filling all four flusher vehicles with recycled water from Central Marin Sanitation Agency (CMSA) in the morning. Two vehicles are then used for pipe cleans in the morning and the other two are parked nearby the pipe clean location. When the water tank runs out, the two stationed vehicles are then used to finish the pipe clean.

This strategic rotation ensures continuous flushing with recycled water, eliminating interruptions or the need to refill water at a potable water hydrant. This efficient method decreased the District's use of potable water for sewer cleaning and removes the need for a second trip to CMSA, enabling an uninterrupted cleaning operation. In



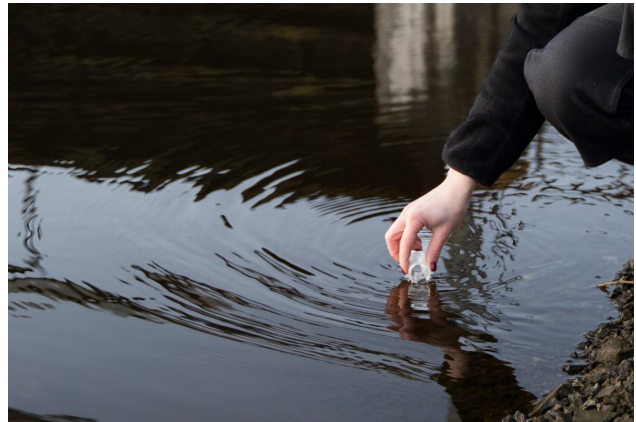
Staff filling at a recycled water hydrant at CMSA.

the first month of this new approach, staff approximately doubled the amount of recycled water used for flushing. Discover more about how RVSD's Line Maintenance crew ensures continuous pipe flow by watching our latest [video](#).

---

## Spill Response Training

District operations staff recently participated in spill response sampling procedure training at Central Marin Sanitation Agency (CMSA), our local lab services provider. The classroom-based training focused on precise techniques and safety protocols for water quality sampling post-spills exceeding 50,000 gallons. Luckily, large spills like this are rare, and that is all the more reason for refresher training. This specially tailored course used CMSA's sampling equipment, ensuring regulatory compliance and equipping our team with invaluable hands-on experience in utilizing proper equipment and techniques for effective sampling.



*Water sampling in a creek.*

---

## Spill Averted!

During routine CCTV inspections, staff identified a surcharged manhole on Mitchell Drive in Fairfax. A surcharged manhole occurs when the inflow of wastewater exceeds the outflow, usually due to a blockage in the downstream pipe. Over time, this can lead to the manhole filling up with water and causing a sewer spill. By the time the flushing equipment arrived, the surcharge subsided. As a precautionary measure, staff performed a pipe clean and CCTV inspection, uncovering a critical collapsing pipe needing repair approximately 56 feet downstream from the manhole. Staff's swift response and proactive measures averted a potential future spill, earning commendation for their vigilant observations and prompt actions.



*Surcharged manhole before and after.*

---

## Common Laterals

A common (shared) sewer lateral is a privately owned lateral that serves more than one property. Ordinance 100 (Section 13. Shared Laterals) does not allow the construction of new common laterals, a prohibition established in October 1993. Properties throughout the District served by common laterals installed before this prohibition are allowed as part of our legacy system.

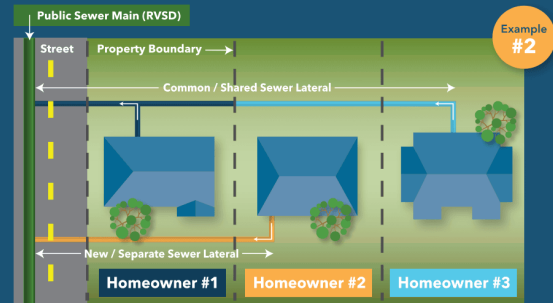
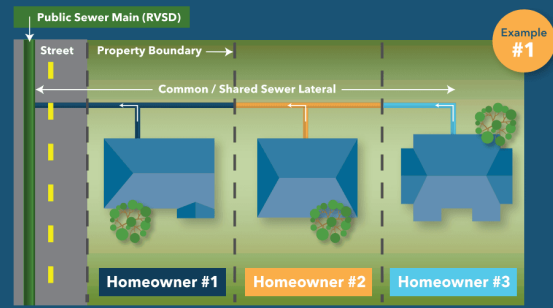
Ordinance 100 gives the District permitting authority to require common sewer laterals meet District standards. Homeowners with common laterals are encouraged to discuss entering into maintenance agreements between all owners served by a common lateral to maintain, repair



and/or replace the common lateral.

While homeowners ultimately bear responsibility for common laterals, our team is available to discuss your sewer lateral and address any inquiries you may have. Visit our [common laterals webpage](#) for further details or reach out to us via email at [info@rvsd.org](mailto:info@rvsd.org) or by calling our main line at 415-259-2949.

## Examples of **COMMON LATERAL** Configurations



*Illustrative examples of common lateral configurations.*

## Capital Improvement Program (CIP) Project Updates

### Woodland Road Creek Crossings and Capacity Improvements

A recent accomplishment of the project includes the removal of an exposed sewer pipe crossing Tamalpais Creek in an easement off Woodland Road. The new sewer pipe is now two feet beneath the creek bed. It was placed using a pneumatic piercing method, a trenchless method used for installing small diameter pipes over short distances along shallow depths. Removing the old sewer pipe across the creek is a significant achievement as it removes an obstruction in the waterway and clears the path for improved steelhead trout fish passage. Check out the before and after photos to see the difference!

Construction progresses further west with ongoing pipe bursting and open trenching. The contractor is continuing to work within easements along this route. Another sewer pipe across Tamalpais Creek is set for removal and replacement using trenchless pipe bursting methods.

RVSD's Infrastructure Asset Management Plan update of 2021 identified sewer pipe creek crossings in the Kent Woodlands area as the highest priority for investment based on a District-wide risk assessment. Replacing these sewers significantly reduces the risk of contamination to Tamalpais Creek and potential damage to the sewer main. It is essential to rehabilitate sewers that cross creeks as they have a higher likelihood of



*Before sewer removal.*

failure due to natural forces associated with storm waters, and a higher consequence of failure through more direct spills and contamination. Visit the [project webpage](#) for more information and updates.



*After sewer removal.*

---

Please remember, if you see a public sewer emergency such as a manhole overflow, leaking pipe, or sewage on the ground, ***please call the RVSD Emergency Line 24/7 at 415-259-2949 as soon as possible*** When making an emergency call, be prepared to provide your name, phone number, and address where the incident occurs. After-hours calls will route to our on-call staff for immediate assistance.

Sincerely,

**Steve Moore, General Manager**

## Stay Connected

**nextdoor**

RVSD is on Nextdoor. Subscribe to our page [here](#) as one of the ways you can find out if there will be construction in your neighborhood.

**Linked in**

We are also on LinkedIn! Follow our page [here](#) to stay up to date on current job announcements and other news about the District.

---

## Public Meetings

**The Ross Valley Sanitary District Board of Directors conducts monthly public meetings. The public is invited to attend these in-person meetings, held at our new Board Assembly Room:**

**Ross Valley Sanitary District**  
1111 Andersen Drive  
San Rafael, 94901

**The public can also attend the meeting remotely from a computer, tablet, or smartphone.**

Ross Valley Sanitary District Board Meetings are typically held on the third Wednesday of each month at 5 p.m. For more information, please click [here](#) or contact the District's Board Clerk at 415-259-2949 or [clerk@rvsd.org](mailto:clerk@rvsd.org).

**The next RVSD Regular Board Meeting is scheduled  
for Wednesday, December 20, 2023.**

[Meeting Access](#)

[Agenda Posting](#)

**Want an alert when the next Board Meeting agenda is available?**  
Please write to our [Clerk of the Board](#) to request upcoming agenda alerts.

---

## Sewer FAQs

Review our Frequently Asked Questions (FAQs) that explain sewer overflows, what to do if you see one, and other commonly asked questions about the sewer system.

[Review FAQs](#)

---

## Before Hiring a Plumbing Contractor

Check the California Department of Consumer Affairs Contractors State License Board (CSLB) for more information. Make sure any plumber you hire is familiar with District policies and programs for any private property sewer emergency.

[Learn More](#)

[Home](#)

[Our Projects](#)

[Sustainability](#)

[Contact Us](#)

### Contact Us

---

#### Phone & Email

415-259-2949 (24/7)  
Email: [info@rvsd.org](mailto:info@rvsd.org)

#### Hours

Mon - Fri  
7:30 a.m. - noon  
1 p.m. - 4 p.m.

#### New Address

1111 Andersen Dr  
San Rafael, CA 94901

---

[Unsubscribe info@rvsd.org](#)

[Update Profile](#) | [Constant Contact Data  
Notice](#)

Sent by [info@rvsd.org](mailto:info@rvsd.org) powered by



Try email marketing for free today!