

General Manager's Monthly Bulletin

May 2019

Ross Valley Sanitary District provides this monthly news bulletin of current notable activity and events to stay connected to the community we serve. We welcome your feedback on any information in the bulletin and if at any time you no longer prefer to receive this information, simply unsubscribe using the link below.

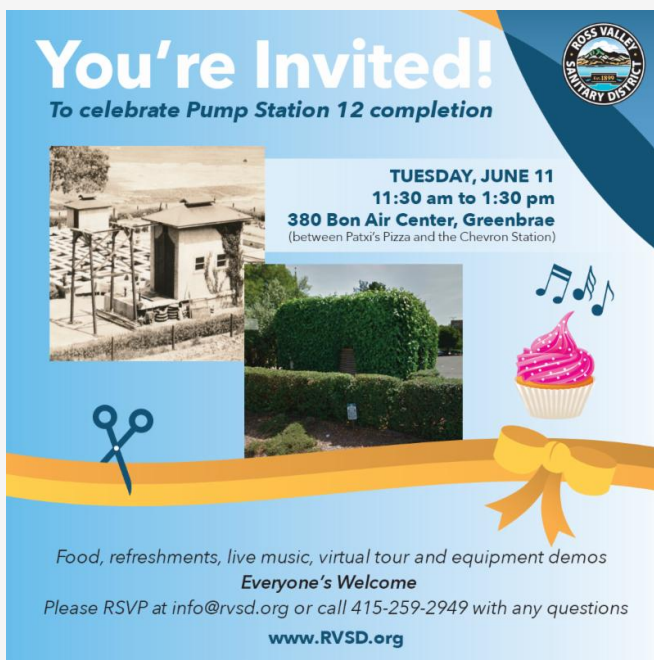
For more information, visit www.RVSD.org.

May Updates - We were reminded this year that the wet season can extend well into May! Peak rainfall was at its highest on May 15, when the San Anselmo rain gauge hit a one-day peak of 2.12 inches. It also rained May 18-21 and logged a total of 2.5 inches over four days. Once again, we can share the welcome news that our sewer system weathered another wet month with no incidents.

We are continuing to prepare for the 2019/20 fiscal year that begins July 1, including finalizing the annual budget, working on a new labor agreement, incorporating a Board-adopted plan to address unfunded pension and other post-employment benefit liabilities, and proposing a five-year plan for sewer rates.



This month's Board agenda also includes a proposal to issue revenue bonds to finance the [new RVSD facility at 1111 Anderson Drive in San Rafael](#), cleanup of contaminated soils at our [Larkspur Landing facility](#), and the next wave of capital projects required by the Cease and Desist Order from the Regional Water Board. The proposed bonds feature a mechanism allowing them to be paid back early with any revenue that comes from selling or leasing District properties on Kerner Blvd. and Larkspur Landing Circle.



Come join us on June 11 to celebrate the completion of improvements to Pump Station 12 in Greenbrae.

[Click here](#) to see the full invitation. You can send an [RVSP email here](#), or call us at 415-259-2949 so we can order the right amount of food.

Please tell others who may be interested in attending.

We look forward to seeing you there!!

Our Public Hearing on Proposed Rates for Sewer Service Charges is being held on Wednesday, June 19, 2019 at 6 pm in the Central Marin Police Authority community room at 250 Doherty Drive in Larkspur. We welcome ratepayers to attend the hearing.

[Click here](#) for more information about rates and the upcoming hearing.

Proposed Annual Sewer Service Charges (per EDU)	Current Rates	Effective July 1 2019	Effective July 1 2020	Effective July 1 2021	Effective July 1 2022	Effective July 1 2023
Ross Valley						
Single Family	\$909	\$961	\$1,024	\$1,083	\$1,146	\$1,212
Single Family with ADU	\$1,818	\$1,441	\$1,536	\$1,625	\$1,719	\$1,819
Multi-Family	\$817	\$861	\$918	\$971	\$1,027	\$1,087
Commercial Low-Strength	\$909	\$961	\$1,024	\$1,083	\$1,146	\$1,212
Commercial High-Strength	\$2,127	\$2,216	\$2,362	\$2,499	\$2,644	\$2,797
Commercial Minimum*	\$0	\$721	\$769	\$814	\$861	\$911
Larkspur						
Single Family	\$1,178	\$1,356	\$1,445	\$1,529	\$1,618	\$1,712
Single Family with ADU	\$2,356	\$2,034	\$2,168	\$2,294	\$2,427	\$2,568
Multi-Family	\$1,055	\$1,215	\$1,295	\$1,370	\$1,449	\$1,533
Commercial Low-Strength	\$1,178	\$1,356	\$1,445	\$1,529	\$1,618	\$1,712
Commercial High-Strength	\$2,765	\$3,114	\$3,320	\$3,513	\$3,717	\$3,933
Commercial Minimum*	\$0	\$1,017	\$1,084	\$1,147	\$1,214	\$1,284

* For commercial accounts with no winter water usage

Sewer Service Charges are assessed per equivalent dwelling unit (EDU) and assigned as follows:

- Single-family residential = 1 EDU.
- Multi-family = 0.9 EDU per dwelling unit.
- ADU (Accessory Dwelling Unit) = 0.5 EDU.
- Commercial (low-strength and high-strength) = 1 EDU per 215 gallons of average daily wintertime water usage, with a minimum of 1 EDU.
- Commercial minimum = 0.75 EDU

Our public service announcements (PSA's) were broadcast on TV through a three-month month pilot with Xfinity and DirecTV, which wrapped up on May 31.

Each PSA is designed to educate viewers about the importance of keeping items including Fats Oils and Grease (FOG), disposable wipes, unused drugs, and sump pump discharges out of our sewers. A message about our sewer lateral grant program also aired.



Two of the PSA's aired during the Warriors-Blazers NBA Western Conference Finals and received wider viewership (Go Warriors!). We are evaluating options to continue running these PSA's by working with other local sanitary districts to share costs. [Click here](#) to see all of the PSA's online.

Work on the [Butterfield/Meadowcroft-Arroyo sewer replacement project](#) in San Anselmo is scheduled to begin in mid- to late-June. A contract was awarded by the Board for the Larkspur Landing Excavation and Remediation Project, and conditional approval was granted for this project by the City of Larkspur Planning Commission on May 28. A related grading permit from the City's Public Works Department is pending. The Larkspur Landing soils have trace amounts of PCB from a marine paint that was used to paint the buildings of our former wastewater treatment plant in the 1970's. The U.S. EPA approved a site cleanup plan in March 2019. Construction is planned this summer and fall.

Steve Moore, General Manager

Creekbed Manhole Repair, Kent Woodlands *- By Steve Moore and Manny Vigil*

Ross Valley has among the oldest sewer lines in the state of California. The original sewer lines were first built of clay materials and installed in watershed low points to facilitate gravity flow of wastewater away from homes, toward the Bay, and eventually to wastewater treatment facilities. Some of these sewers are still located in and around the creeks of our hilly terrain.

A top priority of the District is to protect public health and the environment by reducing the risk of sewer overflows. To do this, we relocate these sewers where possible or ensure they are water tight, so that wastewater does not come in contact with storm water and creek flows. The District maintains over 5,000 manholes located in public streets and in easements on private property.

The main cause of wastewater overflows is when too much storm water enters the sewer system, exceeding its hydraulic capacity. Manholes, or nodes are placed every 350 feet or so along sewer lines, to allow access and maintain them. When these structures are located in creeks, as some are, they are especially vulnerable to allowing storm water to enter into sewers, (known as "inflows"). Some of these manholes are older and made of brick, which over time becomes very leaky.



Extensive maintenance efforts to reach every manhole in the district recently allowed Ross Valley Sanitary District field crews to identify a manhole in a local creek pictured above (left) whose cover was too low and had corroded. The previous manhole condition allowed creek water to enter the sewer, leading to downstream manhole overflows pictured above (right). This sewer is located in Kent Woodlands, the area of our District that receives the most rainfall per year.



The repair crew raised, replaced and sealed the manhole shown above (left) with an inert hydrophobic polyurethane sealant to create a water tight seal, preventing storm water from entering the sewer system during routine storm and high water events like the one shown above (right).

The Tamalpais Creek system of Kent Woodlands supports a population of steelhead trout. Sealing off this manhole benefits public health by preventing sewer overflows and protecting the local aquatic environment by keeping untreated pollutants within the sewer system. Ross Valley Sanitary District is committed to rebuilding our sewer system to support healthy creeks and effective sewer collection and treatment.

Great job, Condition Assessment and Repair crews!

RVSD Reminders - [Click here](#) to review our Frequently Asked Questions (FAQs) that explain sewer overflows and what to do.

Call the RVSD Emergency Line 24/7 at 415-259-2949 if you have a public sewer emergency, such as a manhole overflow, leaking pipe, smell odors, or see sewage on the ground. Emergency crews are available 365 days of the year, 24 hours a day, 7 days per week!



[Click here](#) to check the California Department of Consumer Affairs Contractors State License Board (CSLB) for information before you hire a plumbing contractor. Make sure any plumber you hire is familiar with district policies and programs for any private property sewer emergency.

All of this information can be viewed by clicking "EMERGENCY" on our website homepage or [click here](#).



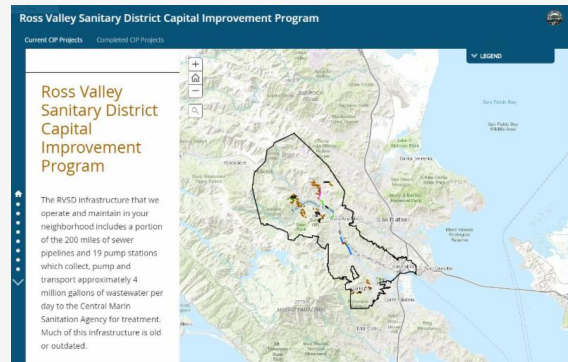
RVSD CIP Construction Update - RVSD Capital Improvement Program (CIP) construction projects are taking place now to rehabilitate underground sewer pipes and associated structures throughout our service area.

These sewer line repairs and rehabilitation projects are critical to protect public health and the environment by reducing the risk of sewer overflows.

Look for construction projects taking place as the rainy season ends. Click on each of the CIP construction projects listed below for the latest project information and updates.

1. [Fairfax, Larkspur, San Anselmo Sewer Projects](#)
2. [Kentfield PS 15 Improvements](#)
3. [Ross Common / Upper Shady Lane Sewer Improvements](#)
4. [San Anselmo Sewer Improvements - Butterfield](#)
5. [San Anselmo Sewer Improvements - Nokomis](#)

[Click here](#) to see our CIP overview or for direct access to our interactive project map you can [click here](#). A magnifying glass icon is provided with the map to enter your address and see if construction is currently taking place, or will take place in your neighborhood. You can also click on the map area you are interested in and identify the project name, find contact information and more.



[Click here](#) to select and receive timely construction updates or call us at 415-259-2949.

RVSD APPRECIATES your patience during construction as we fulfill our commitment to making strategic long-term infrastructure improvements.

Next Board Meeting - The Ross Valley Sanitary District Board Meetings are typically held the third Wednesday of each month at 5pm at the Central Marin Police Authority's Community Room, located at 250 Doherty Drive in Larkspur.

The next Regular Board meeting is scheduled for Wednesday, June 19, 2019 at 5pm. The Public Hearing on Proposed Rates for Sewer Service Charges will begin at 6 pm.

[Check the agenda posting here](#) 72 hours before the meeting for open session time. The meeting will be held at the Central Marin Police Authority's Community Room, located at 250 Doherty Drive in Larkspur.

Want an alert when the next Board meeting agenda is available? Please write to our [Clerk of the Board](#) to request to be included in upcoming agenda alerts.

[Click here to visit RVSD.org](#)