



125 Years of Service

# Ross Valley Sanitary District

## General Manager's Monthly Bulletin

March 2024



*Dry creek bed in Ross.*

As we transition through the vibrant month of March, Ross Valley Sanitary District is delighted to present the latest updates in this edition of our monthly newsletter. Read on to explore the highlights of our agency's endeavors and the ways in which we're working together to safeguard our local environment and enhance quality of life for all residents of Ross Valley.

Please note that we have moved into our new headquarters located at 1111 Andersen Drive in San Rafael. As always, RVSD public lobby office hours are open 7:30 a.m. to noon and 1 p.m. to 4 p.m., Monday through Friday. Our dedicated staff is here to assist you via phone, email or in person.

Remember, if you see a public sewer emergency such as a manhole overflow, leaking pipe, or sewage on the ground, ***please call the RVSD Emergency Line 24/7 at 415-259-2949 as soon as possible.***

## Accomplishments

### Do you know where your tools are?

During system inspections in San Anselmo, staff encountered a node which contained unusual debris inside the manhole. The debris included bolts, garden stakes, and short steel rods which were obstructing system flow and trapping items like wipes or rags. Upon this discovery, staff reached out to residents in the area, and it was revealed that one of the resident's children had inserted the debris through the holes of the manhole lid.

While we encourage outdoor creative play and have experienced similar "surprises" with our own little ones, staff talked with the resident about the potential consequences of putting such debris in the system.



*Tools found in manhole.*

## Emergency Response Plan Updates for Pump Stations

Staff have completed updates to the District's ERPs (Emergency Response Plans) for its 19 pump stations. The ERP serves as a user-friendly guide for staff on how to make sure wastewater is safely bypassed around pump stations that can malfunction for a variety of reasons.

Additionally, staff utilized drone footage to update maps of low spots (manholes) in case of station failures. This provides quick reference for staff when setting up bypass pumping or responding to pump station failures at any hour of the day. These updates were prompted by the update of the District's SERP (Spill Emergency Response Plan) and incorporates new pump station infrastructure.



*Emergency Response Diagram for Pump Station 14.*

---

## Canceled Planned Power Outage Becomes Unplanned Training

Sometimes circumstances call for RVSD staff to pivot from planned work and do something else constructive. This month staff had prepared standby generator equipment for a planned PG&E electrical service outage at Riviera Circle and Pump Station 21 (on Highway 101). However, due to weather conditions, the originally planned power outage was canceled. Instead of simply packing up and moving on, staff saw this as an opportunity for training, particularly for a newer staff member preparing for On-Call duty. Following the SOP (standard operating procedure), the staff member was tasked with connecting generator power and operating multiple stations to ensure competency in managing standby emergency generators and pump station equipment.



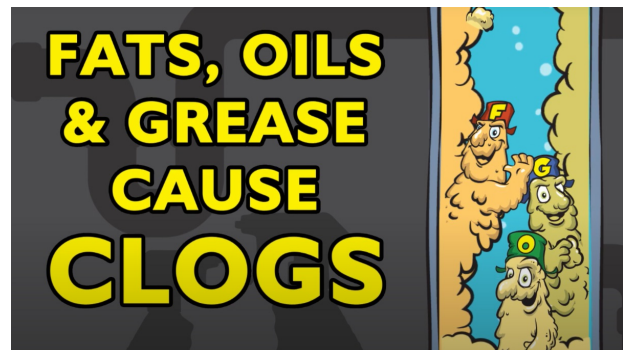
*Staff training at the Pump Station.*

---

## Fats, Oils, and Grease

Fats, oils, and grease (FOG) can be a real pain in the drain! They're a big reason behind clogs and spills in household and restaurant plumbing, as well as public sewer lines. When FOG gets into the sewer line, it's like a sticky situation waiting to happen—it clings to the pipe walls, roots and other debris and can cause major blockages once it cools down.

There's an easy fix to prevent messy mishaps. Instead of pouring leftover FOG down the drain, toss it into the compost bin or trash. If you use a paper towel to wipe up any FOG from cooking utensils, dishes, or pots, just toss the paper towel in the compost bin or trash too. It's a simple step that can really make a difference in reducing the risk of a messy sewer overflow.



*Screenshot of FOG Video*

Click [here](#) to view a video about FOG on the District



# Capital Improvement Program (CIP) Project Updates

## FY 23/24 Gravity Sewer Improvements Project

Construction has begun on this project. The contractor is currently working in San Anselmo along Austin Avenue, Melville Avenue, and Vine Avenue.

Construction along Ross Avenue in front of Wade Thomas Elementary School is planned for the week of Spring Break.

The project scope is to rehabilitate about 15,384 linear feet (LF) of sewer main, ranging from 4 to 14 inches in diameter, across San Anselmo, Greenbrae, and Fairfax. The rehabilitation will include the replacement of 642 LF through open-cut and 14,742 LF via pipe bursting. Additionally, the project will install approximately 241 LF of new 8-inch sewer main in Greenbrae. The project locations are within public rights-of-way or designated easements across private properties. The project includes two areas in Greenbrae that had significant sewer backups into residences in October 2021 due to root intrusion as well as structural and capacity issues.

The primary goal of this rehabilitation is to mitigate the risk of sanitary sewer spills and backups. It includes rectifying defects that could cause spills and sealing leaks to reduce inflow and infiltration during wet weather.

Visit the project [webpage](#) for more information and updates.



*Construction crew working on a sewer replacement.*

## Lift Stations 20, 31 & 32 Improvements

Electric and mechanical equipment for this project is scheduled for delivery over the next month. Construction is expected to begin at all three locations in April.

The District's Infrastructure Asset Management Plan update of 2021 identified these three lift stations as the highest priority lift stations for upgrading based on a District-wide risk assessment. Since their configurations are similar, they were combined into one project to take advantage of economies of scale. LS20 is in Larkspur Landing next to East Sir Francis Drake Blvd, and near the northbound 101 on-ramp. LS31 and LS32 are located on Riviera Circle at Via la Brisa and Corte del Bayo, respectively, in the Larkspur Marina neighborhood.

The project will convert the lift stations to submersible pump configurations, saving maintenance and energy costs. The project also includes replacing the two small force mains for the LS31 and LS32 lift stations as they are made of deteriorating ACP pipe, an inferior pipe material used in the 1960s and 1970s that is targeted for



*Pump Station 31*

replacement by the District throughout the service area. New electrical control panels, communications equipment, and flow meters will improve reliability of the lift stations and allow for faster response times to issues at each station.

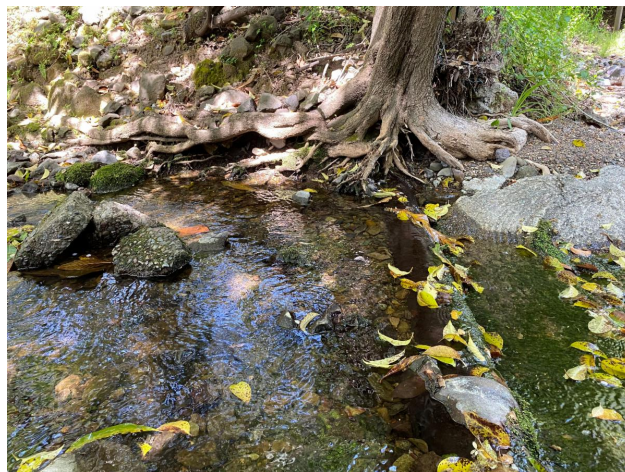
Visit the project [webpage](#) for more information and updates.

---

## Woodland Road Creek Crossings and Capacity Improvements

Work on this project has been delayed until there is a more extended period of dry weather. Construction crews will then work on punch list items and paving. Project completion has moved to late spring pending corrective work being completed by the contractor.

Visit the project [webpage](#) for more information and updates.



*Sewer pipe in creek (now removed).*

---

Please remember, if you see a public sewer emergency such as a manhole overflow, leaking pipe, or sewage on the ground, **please call the RVSD Emergency Line 24/7 at 415-259-2949 as soon as possible** When making an emergency call, be prepared to provide your name, phone number, and address where the incident occurs. After-hours calls will route to our on-call staff for immediate assistance.

Sincerely,



**Steve Moore, General Manager**

## Stay Connected

**nextdoor**

RVSD is on Nextdoor. Subscribe to our page [here](#) as one of the ways you can find out if there will be construction in your neighborhood.

**Linked in**

We are also on LinkedIn! Follow our page [here](#) to stay up to date on current job announcements and other news about the District.

---

# Public Meetings

The Ross Valley Sanitary District Board of Directors conducts monthly public meetings. The public is invited to attend these in-person meetings, held at our new Board Assembly Room:

## Ross Valley Sanitary District

1111 Andersen Drive

San Rafael, 94901

The public can also attend the meeting remotely from a computer, tablet, or smartphone.

Ross Valley Sanitary District Board Meetings are typically held on the third Wednesday of each month at 5 p.m. For more information, please click [here](#) or contact the District's Board Clerk at 415-259-2949 or [clerk@rvsd.org](mailto:clerk@rvsd.org).

**The next RVSD Regular Board Meeting is scheduled  
for Wednesday, April 17, 2024.**

Meeting Access

Agenda Posting

**Want an alert when the next Board Meeting agenda is available?**

Please write to our [Clerk of the Board](#) to request upcoming agenda alerts.

---

## Sewer FAQs

Review our Frequently Asked Questions (FAQs) that explain sewer overflows, what to do if you see one, and other commonly asked questions about the sewer system.

Review FAQs

---

## Before Hiring a Plumbing Contractor

Check the California Department of Consumer Affairs Contractors State License Board (CSLB) for more information.

Make sure any plumber you hire is familiar with District policies and programs  
for any private property sewer emergency.

Learn More

[Home](#)

[Our Projects](#)

[Public Education](#)

[Contact Us](#)

Contact Us

### Phone & Email

**415-259-2949 (24/7)**  
Email: [info@rvsd.org](mailto:info@rvsd.org)

### Hours

**Mon - Fri**  
**7:30 a.m. - noon**  
**1 p.m. - 4 p.m.**

### New Address

**1111 Andersen Dr**  
**San Rafael, CA 94901**

---

Ross Valley Sanitary District | 1111 Andersen Drive, San Rafael, CA 94901

[Unsubscribe info@rvsd.org](#)

[Update Profile](#) | [Constant Contact Data](#)  
[Notice](#)

Sent by [clerk@rvsd.org](mailto:clerk@rvsd.org) powered by



Try email marketing for free today!