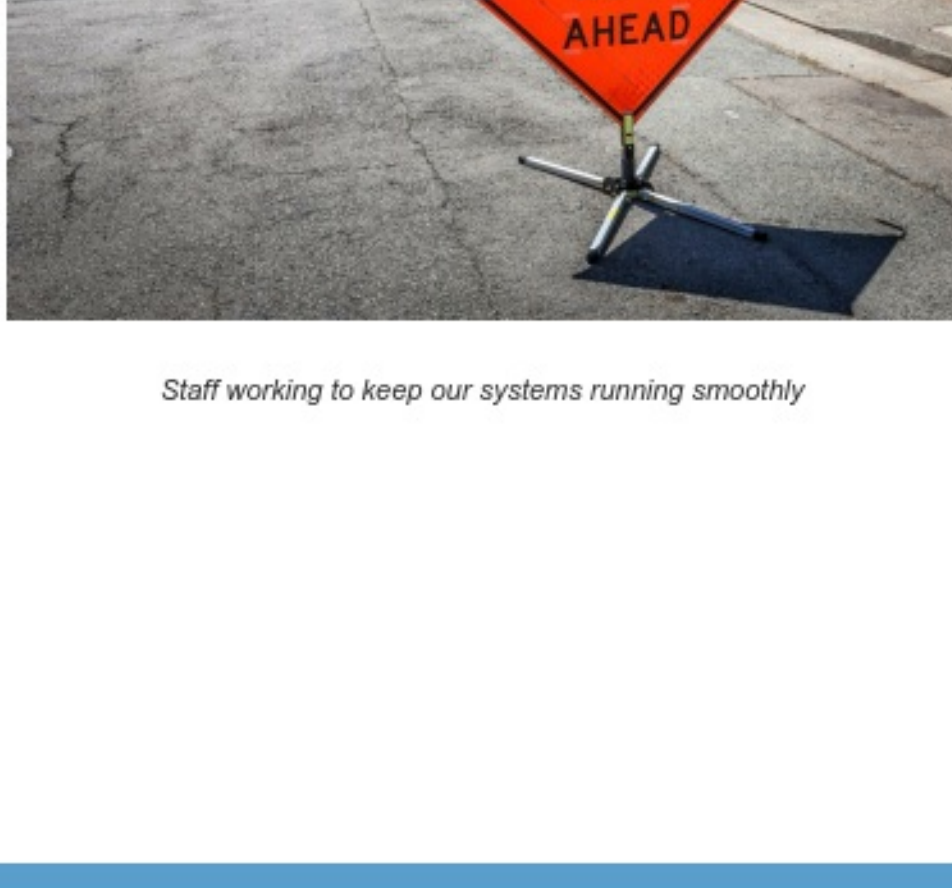


125 Years of Service

Ross Valley Sanitary District

General Manager's Monthly Bulletin

July 2025



Staff working to keep our systems running smoothly

As July comes to a close, RVSD remains focused on strengthening our system and ensuring long-term reliability. This month's work—including a multi-departmental effort by RVSD in collaboration with residents and a local school, GPS survey work in public easements, and ongoing updates to key asset data—demonstrates our commitment to maintaining accurate information, improving access, and investing in resilient infrastructure. These initiatives are part of our broader commitment to delivering consistent, high-quality service to the communities we serve.

Our headquarters are located at 1111 Andersen Drive in San Rafael. Our regular public lobby office hours are Monday through Friday, from 7:30 a.m. to Noon and 1 p.m. to 4 p.m. Our dedicated staff are here to assist you via phone, email or in person.

We are available for emergency calls 24/7. If you see a public sewer emergency such as a manhole overflow, leaking pipe, or sewage on the ground, **please call the RVSD Emergency Line at 415-259-2949 as soon as possible**. Every minute counts to help avoid a public health or environmental hazard. Thank you!

Accomplishments

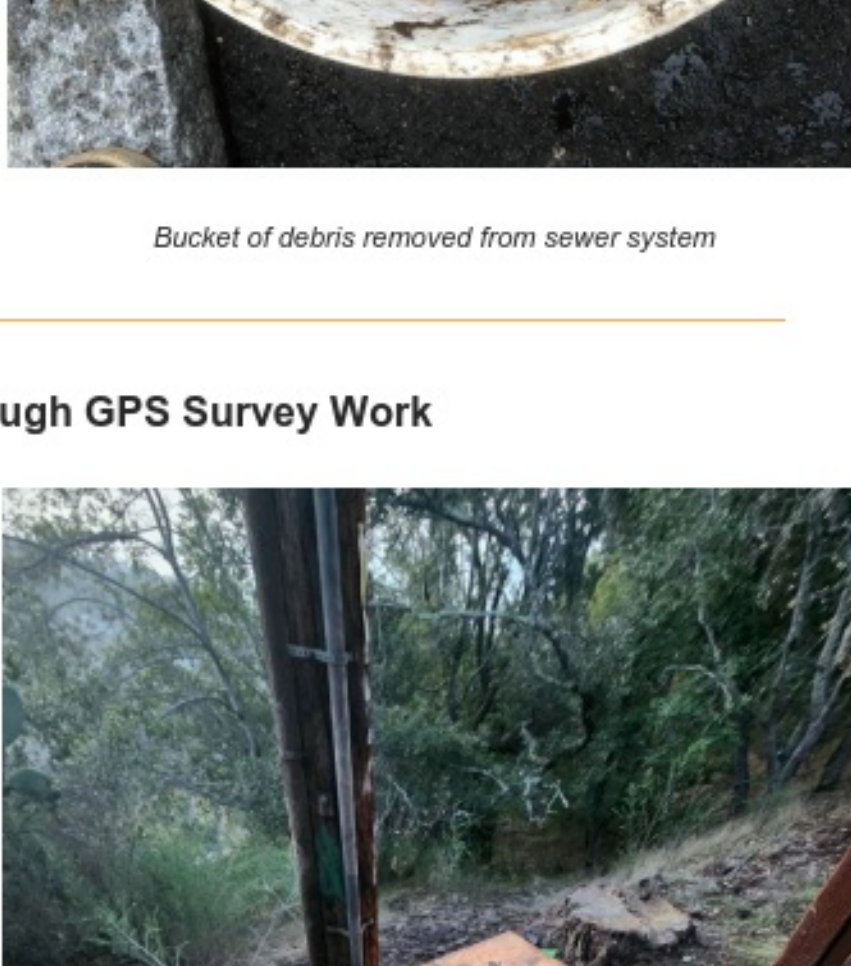
Community Collaboration Drives RVSD Progress

This month, Line Maintenance and Condition Assessment crews worked closely with Branson School staff and nearby residents in the Town of Ross to complete line cleaning and condition assessment during the school's summer recess. Access was coordinated in advance with school staff and residents to ensure a smooth process and minimize disruption to school operations.

Work began with Line Maintenance crews performing cleaning, followed by Condition Assessment staff inspecting the system while the site remained accessible. Given the school's large and complex layout, well-planned collaboration was essential.

During the work, crews discovered and promptly removed a significant buildup of grit in one of the lines. As a result, the cleaning frequency for that line was increased from a three-year to a two-year cycle to help prevent future buildup and reduce the risk of potential spills.

Strong teamwork and planning ensured a smooth operation, benefiting the District, the school, and the surrounding community.



Bucket of debris removed from sewer system

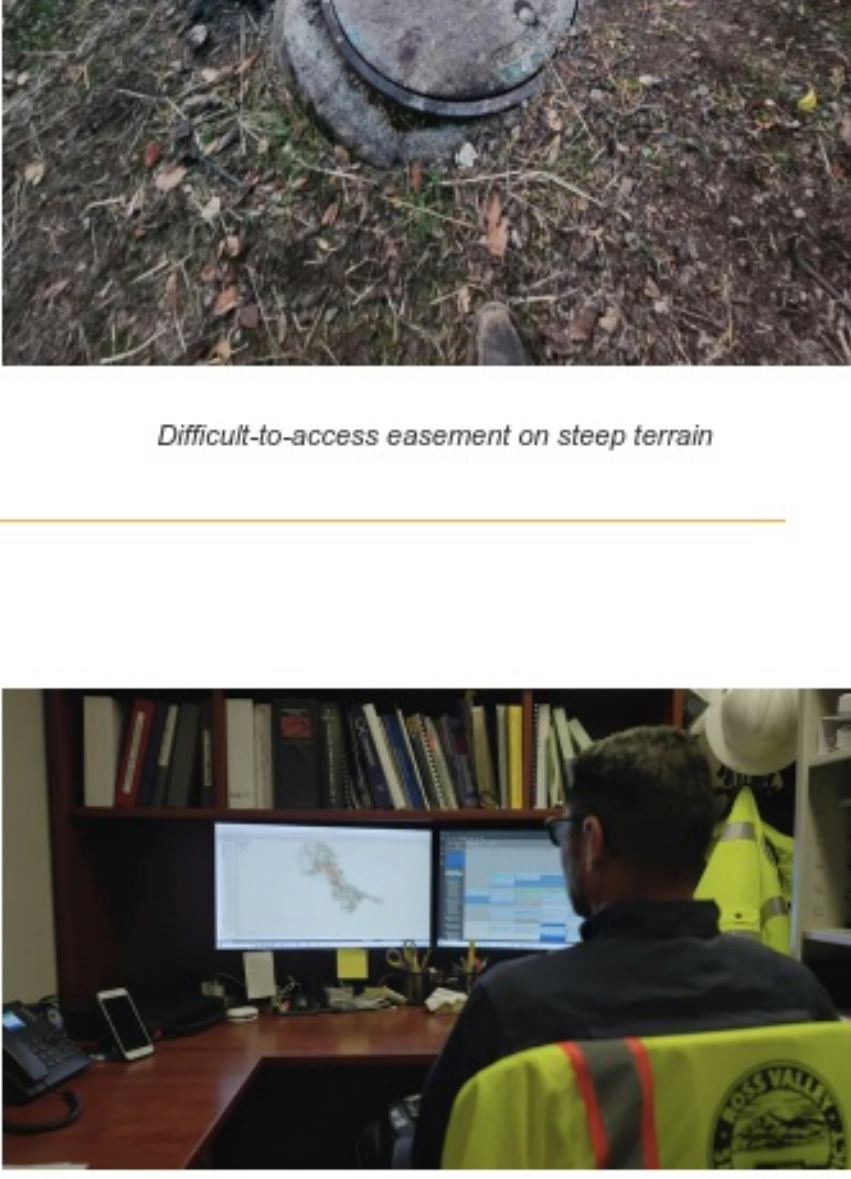
Enhancing Infrastructure Access Through GPS Survey Work

Over 30% of RVSD's infrastructure falls within easements on private property, creating ongoing challenges for access and maintenance. This makes accurate data and clear access in these areas critical to our operations.

This month, staff completed 57 new GPS surveys across easements and difficult-to-access backyards in San Anselmo and Larkspur. These surveys help ensure up-to-date mapping and asset data, which support long-term planning and enable our crews to quickly and efficiently locate and maintain infrastructure.

As part of RVSD's ongoing Easement Initiative, we work closely with the local fire department to identify and maintain clear access through overgrown or obstructed areas—supporting both emergency response and routine maintenance. We also coordinate with homeowners and contractors to preserve access and raise awareness about the importance of keeping easements clear.

To learn more about easements, or to check if a public easement exists on your property and provide your contact information, visit our website [here](#).



Difficult-to-access easement on steep terrain

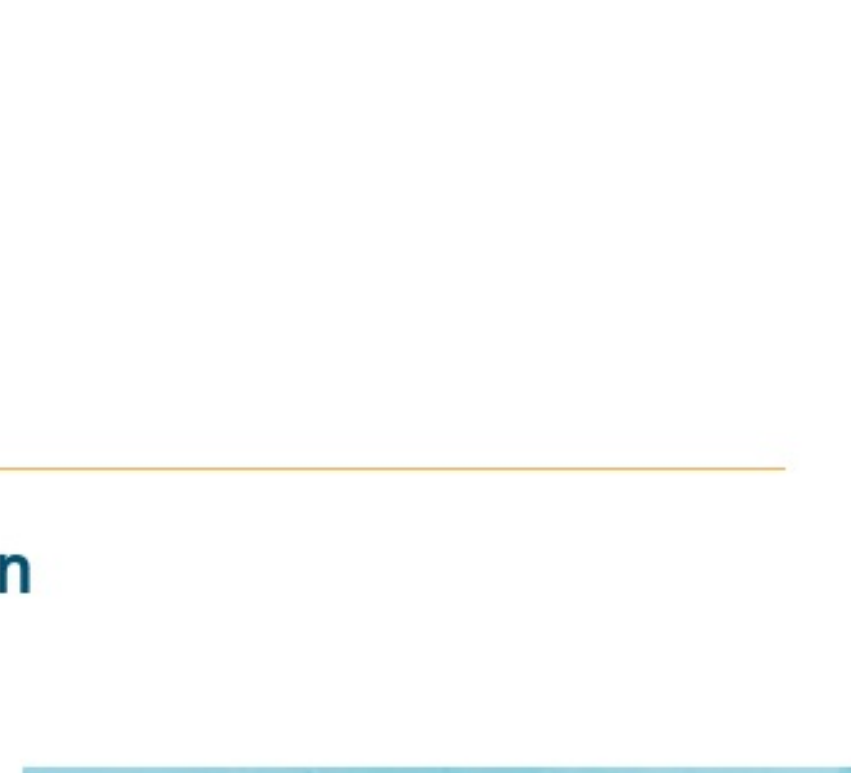
Pump Station Asset Data Updated

As part of our commitment to continuous improvement, staff recently completed detailed asset information updates for the newly refurbished pump stations LS 31 and LS 32 (Riviera Circle). Key data such as make, model, and serial numbers were compiled for all major equipment to support ongoing maintenance, troubleshooting, and efficient parts procurement.

These asset details will be integrated into the District's Computerized Maintenance Management System (CMMS) and Geographic Information System (GIS). Together, these systems enhance asset tracking, lifecycle management, and reliable planning and documentation of maintenance activities.

Our CMMS has been customized to track a wide range of data tailored to our specific needs, including tracking of asset conditions, automated cleaning schedules, alerts for overdue maintenance, mapping of capital improvement areas, tracking lost nodes, flagging areas for supervisory review, and more, helping us prioritize work, manage resources, and reduce service disruptions.

GIS provides spatial context for our infrastructure management, making it easier for crews to quickly locate and manage assets in the field. By combining CMMS and GIS, RVSD boosts operational efficiency, enhances service reliability, and ensures our infrastructure remains reliable and resilient for the communities we serve.



Staff utilizing CMMS data for asset management

Education and Information

Do You Have a Sump Pump?

If your drains slow during heavy rain, your sump pump connection might be part of the problem. RVSD staff recently conducted community outreach within the Heather Gardens neighborhood of Larkspur, near Pump Station 30 and Redwood High School, to raise awareness about improper sump pump connections. Door hangers were distributed to 138 homes, informing residents about the importance of keeping sump pumps disconnected from the sewer system.

During wet weather, this area frequently experiences higher flows, possibly caused by sump pumps discharging rainwater and groundwater from crawl spaces or low-lying areas on property directly into the sewer system. This extra flow can easily overwhelm the sewer system, which can lead to backups into homes, streets, or local waterways, and cause expensive property damage or a public health hazard.

Sump pumps are designed to move clean groundwater away from home foundations by draining to the stormwater system—not the sewer system. When improperly connected to the sewer, they increase treatment costs and the risk of sewer spills.

Community response to our outreach was positive, with several residents taking the time to show staff their sump pump discharge locations. Summer is an ideal time to inspect your system and disconnect your sump pump from the sewer before rain season returns. If you're unsure about your current setup, contact a licensed plumber to evaluate your connection and, if needed, reroute the discharge appropriately.

For more information on private sewer lateral maintenance or to watch our Sump Pump Video, visit our website [here](#).



Is Your Sump Pump Connected Properly?

Capital Improvement Program (CIP) Project Updates

Palm-Mann-Cypress Gravity Sewer Improvements Project

Construction is now underway, with work beginning on Cypress Avenue and scheduled to proceed to Mann Drive, Palm Avenue, and then Hill Drive.

The project will rehabilitate approximately 1.9 miles of gravity sanitary sewer pipelines in Kentfield, using pipe bursting as the primary construction method, with open-trench construction where pipe bursting is not feasible. These improvements will reduce infiltration and inflow (I&I) of stormwater and groundwater, increase system reliability, reduce maintenance needs, and minimize the risk of sewer spills.

The project was fast-tracked to align with the County of Marin's scheduled pavement rehabilitation on several local streets in 2025.

This project is a key component of the District's ongoing efforts to upgrade infrastructure and reduce capacity constraints, as outlined in the 2021 Infrastructure Asset Management Plan (IAMP). It will also help alleviate downstream capacity issues and further mitigate I&I impacts in the area.

Abandoned lateral connections to the public sewer system are a key source of I&I, and function like a French drain, conveying shallow groundwater directly into the sewer system, especially when it's raining. In the first few days of this project, several abandoned lateral connections have already been identified and sealed off. These actions will help reduce both peak flows and base flows of clean water into the sewer system, improving system reliability.

Visit the project [webpage](#) for more information and updates.



Pipe bursting project

Lift Station 30 Heather Gardens & Heatherwood Stormwater Pump Station Rehabilitation Project

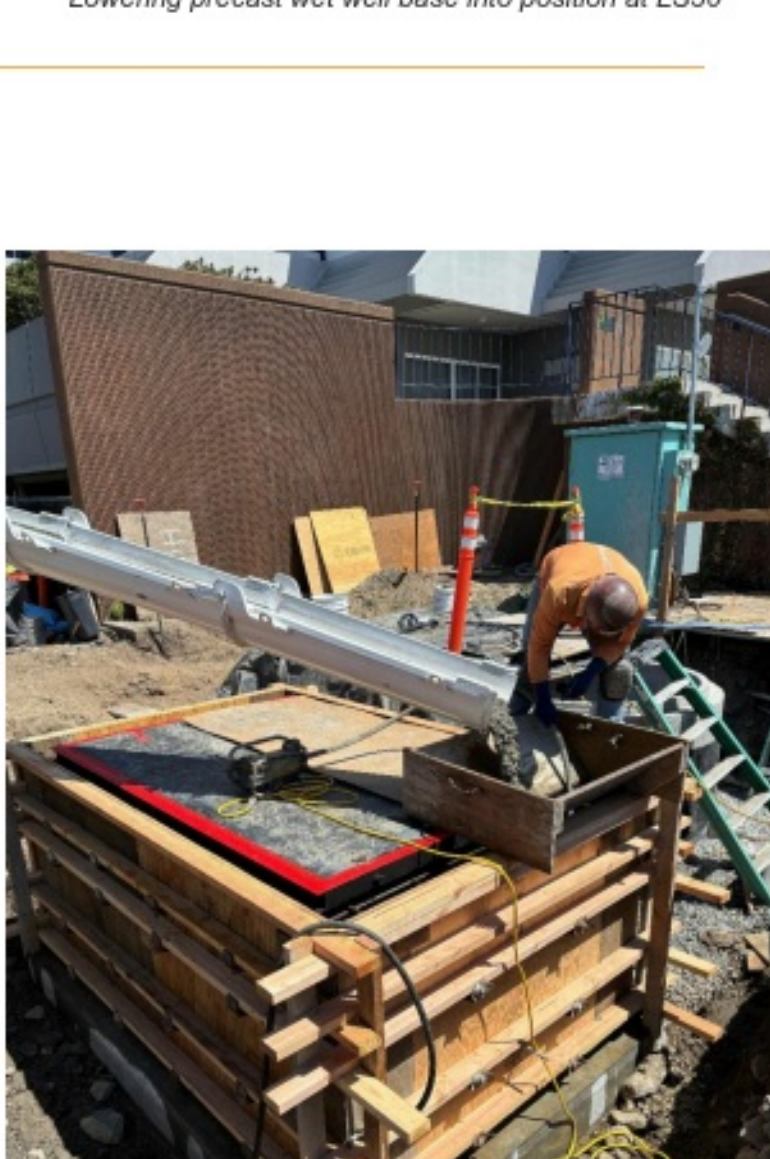
Construction is underway, with precast wet wells now installed at both the sanitary and stormwater facilities. Bypass systems are in place to keep both systems running smoothly.

In collaboration with the City of Larkspur, this project will upgrade and enhance the infrastructure serving the Heather Gardens Lift Station (LS30) and the City of Larkspur's adjacent Heatherwood Stormwater Pump Station. The project involves demolishing the existing combined facilities and constructing separate pumping stations for sanitary and stormwater management. This separation will prevent the occasional inflow of storm water into the sanitary sewer that has occurred at this location over the years.

Key improvements include elevating critical electrical equipment above the FEMA 100-year flood elevation and installing new concrete wet wells, valve vaults, submersible pumps, backup power generators and upgraded electrical controls and alarms that meet both District and City standards. The project will also address the issue of stormwater inflow into the sanitary sewer wet well, described above. This project adapts to climate change by elevating system components above projected sea level rise elevations.

Currently, sandbags are used as a temporary measure to minimize inflow during large storm events. By separating the two functions and upgrading the equipment, this project will also reduce the risk of sanitary sewer spills, improve system reliability, and enhance overall efficiency.

Visit the project [webpage](#) for more information and updates.



Lowering precast wet well base into position at LS30

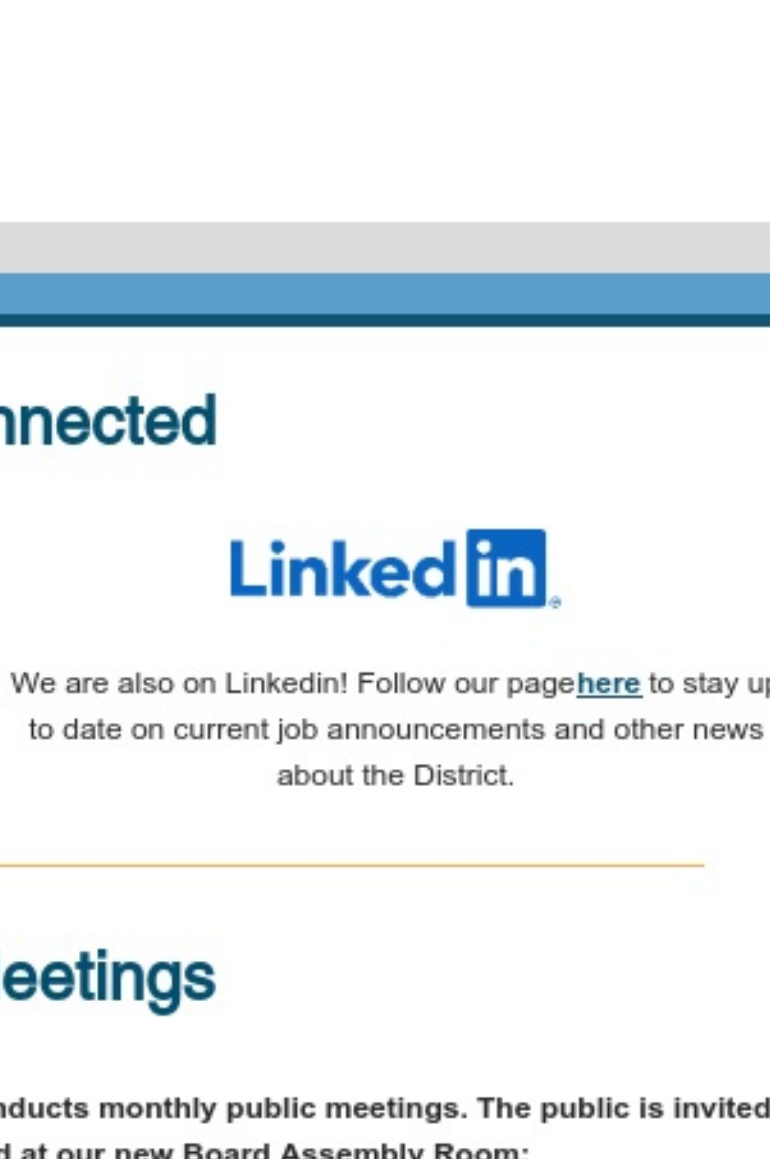
Lift Stations 20, 31 & 32 Improvements

LS20 is currently under construction, with recent progress including the concrete pour for the new flow meter vault, installation of temporary electrical service, and setup of bypass systems. LS31 is complete, and final completion of LS32 is pending PG&E energization.

LS20 is located in Larkspur Landing next to East Sir Francis Drake Blvd, and near the northbound 101 on-ramp. LS31 and LS32 are located on Riviera Circle at Via La Bresa and Corte Del Bayo, respectively, in the Larkspur Marina neighborhood.

This project converts all three lift stations to submersible pump configurations, reducing long-term maintenance and energy costs. It also includes new electrical control panels, communications equipment, flow meters, and the rehabilitation of two small force mains at LS31 and LS32 (now complete). These improvements will enhance system reliability and allow for faster response to operational issues at each station.

Visit the project [webpage](#) for more information and updates.



Concrete pour for new flow meter at LS20

Please remember, if you see a public sewer emergency such as a manhole overflow, leaking pipe, or sewage on the ground, **please call the RVSD Emergency Line 24/7 at 415-259-2949 as soon as possible**. When making an emergency call, be prepared to provide your name, phone number, and address where the incident occurs. After-hours calls will route to our on-call staff for immediate assistance.

Sincerely,

Steve Moore, General Manager

Stay Connected

nextdoor

RVSD is on Nextdoor. Subscribe to our page [here](#) as one of the ways you can find out if there will be construction in your neighborhood.

LinkedIn

We are also on LinkedIn! Follow our page [here](#) to stay up to date on current job announcements and other news about the District.

Public Meetings

The Ross Valley Sanitary District Board of Directors conducts monthly public meetings. The public is invited to attend these in-person meetings, held at our new Board Assembly Room:

Ross Valley Sanitary District
1111 Andersen Drive
San Rafael, 94901

The public can also attend the meeting remotely from a computer, tablet, or smartphone.

Ross Valley Sanitary District Board Meetings are typically held on the third Wednesday of each month at 5 p.m. For more information, please click [here](#) or contact the District's Board Clerk at 415-259-2949 or [clerk@rvsd.org](#).

The next RVSD Regular Board Meeting is scheduled for Wednesday, August 20, 2025.

Meeting Access

Agenda Posting

Want an alert when the next Board Meeting agenda is available?
Please write to our [Clerk of the Board](#) to request upcoming agenda alerts.

Sewer FAQs

Review our Frequently Asked Questions (FAQs) that explain sewer overflows, what to do if you see one, and other commonly asked questions about the sewer system.

Review FAQs

Before Hiring a Plumbing Contractor

Check the California Department of Consumer Affairs Contractors State License Board (CSLB) for more information.

Make sure any plumber you hire is familiar with District policies and programs for any private property sewer emergency.

Learn More

Home

Our Projects

Public Education

Contact Us

Contact Us

Phone & Email
415-259-2949 (24/7)
Email: [info@rvsd.org](#)

Hours
Mon - Fri
7:30 a.m. - noon
1 p.m. - 4 p.m.

New Address
1111 Andersen Dr
San Rafael, CA 94901

Ross Valley Sanitary District | 1111 Andersen Drive | San Rafael, CA 94901 US

[Unsubscribe](#) | [Update Profile](#) | [Constant Contact Data Notice](#)

Constant Contact

Try email marketing for free today!