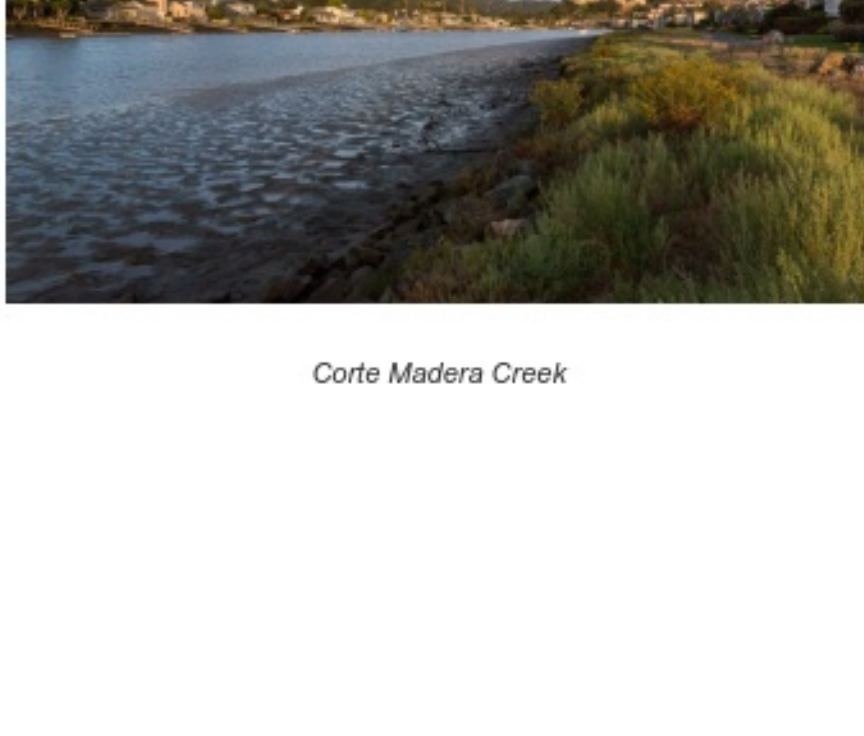


125 Years of Service

Ross Valley Sanitary District

General Manager's Monthly Bulletin

December 2024



Corte Madera Creek

As we approach the end of December and continue through the wet weather season, the District remains committed to protecting both our infrastructure and the environment, while ensuring reliable service to Marin County. This month's bulletin highlights key initiatives focused on proactive measures to mitigate sewer backups and spills during the wet weather season. We are dedicated to continually improving our services and fostering a cleaner, healthier environment for all. **Wishing you a safe and enjoyable holiday season!**

Our headquarters are located at 1111 Andersen Drive in San Rafael. As we approach the holiday season, please be aware of the following schedule changes: On December 24th, we will be operating a half-day, and we will be closed on December 25th. Similarly, December 31st will be a half-day, while we will be closed on January 1st and January 20th. After the holiday, RVSD will resume regular public lobby office hours, Monday through Friday, from 7:30 a.m. to Noon and 1 p.m. to 4 p.m. Our dedicated staff is here to assist you via phone, email or in person.

Remember, if you see a public sewer emergency such as a manhole overflow, leaking pipe, or sewage on the ground, **please call the RVSD Emergency Line 24/7 at 415-259-2949 as soon as possible.**

Accomplishments

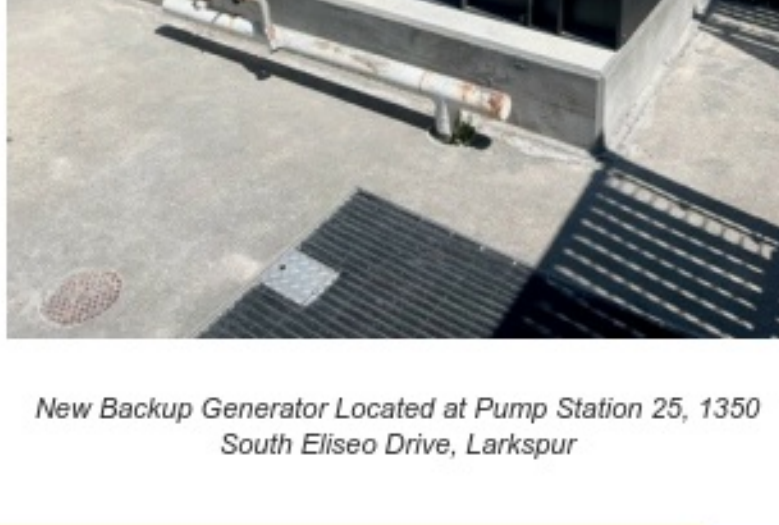
Pump Stations Generator Testing: Ensuring Backup Power Readiness

As we continue preparations for the wet weather season, it's critical to ensure that our pump station backup generators are fully operational in the event of a power outage. Power disruptions are more frequent during wet weather, and it is essential that our pumping stations remain fully functional to prevent any service interruptions or sewer spills.

To prepare for potential power outages, our staff conduct monthly generator tests at all pumping stations and check to make sure diesel fuel tanks (shown in dark brown in the photo) are replenished. These tests and checks ensure that each generator is ready to activate when needed, allowing our pumping stations to operate seamlessly even during power failures. A full tank ensures continuous operation for days instead of hours.

Reliable backup power is especially vital during stormy conditions when increased water volumes can put additional strain on our systems. Through regular generator testing, we proactively address the risks of power failure, ensuring that we can continue providing uninterrupted service to the community.

Proper system maintenance and readiness for emergencies are crucial. Our ongoing commitment to these tests reflects our dedication to providing reliable and efficient service, even in the face of challenging weather conditions.



New Backup Generator Located at Pump Station 25, 1350 South Eliseo Drive, Larkspur

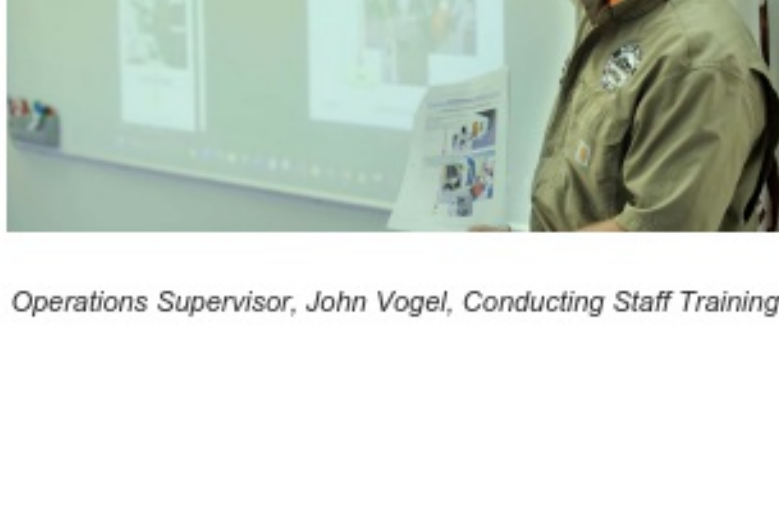
Operations Annual SERP Training

The District has a comprehensive Spill Emergency Response Plan (SERP), and this month, staff participated in training through our web-based safety platform, Target Solutions. This specialized training is designed for responding to sewer system spills, covering spill mitigation procedures and reporting requirements within the District's service area.

As part of the training, staff responded to a simulated sewer spill exercise near Larkspur Landing. This hands-on simulation provides field training on spill response and spill volume calculations. Such exercises ensure staff are well-prepared for real-world situations, particularly during peak wet weather when quick response is critical.

Our Training and Employee Development Program focuses on enhancing employee skills, ensuring operational efficiency, and promoting continuous improvement. It includes Standard Operating Procedures (SOPs) that guide work orders and maintain service standards, as well as easy-to-understand, photo-based training materials.

The District's award-winning Competency-Based Training programs, including the SERP and Pump Stations Emergency Response Plan, provide essential safety information and ensure staff are equipped to handle emergencies. These trainings are conducted annually, with in-house refreshers throughout the year. The Competency-Based Program also includes over 200 user-friendly, photo-based SOPs to ensure consistency and safety in all procedures and equipment use.



Operations Supervisor, John Vogel, Conducting Staff Training

New Standard Operating Procedure for CCTV 3D Geosense Collections

As part of our ongoing efforts to enhance training and preparedness, staff continue to innovate and improve our operational capabilities. This month, staff developed a new Standard Operating Procedure (SOP) for 3D Geosense collections on the CCTV van. This procedure enables the capture of curvilinear data, allowing for precise measurement of the X, Y, and Z axes of the pipe during regular CCTV inspections. By collecting this data, we can generate both 2D and 3D profiles of the pipes, providing accurate vertical and horizontal alignment details.

This new initiative, combined with our GPS locating program, significantly enhances the District's ability to map and profile pipe assets with greater accuracy. These advanced tools ensure our team is better equipped to identify and address potential issues, especially during wet weather when systems face increased strain. The integration of this technology further strengthens our commitment to a well-prepared, responsive team capable of managing both routine and emergency operations.



SOP with Photo-Based Instructions

Sump Pump Connections: Prevent Sewer Backups This Wet Weather and Holiday Season

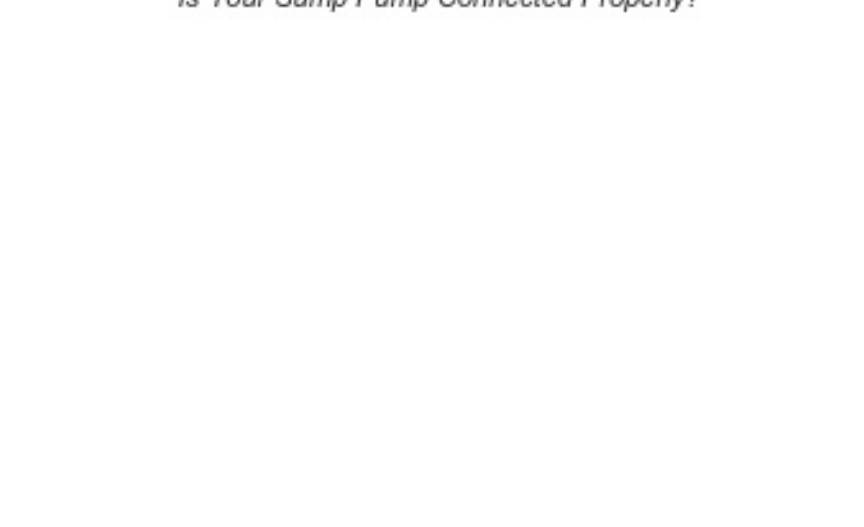
As we continue preparations for the winter and holiday season, it's important to ensure your home's plumbing and drainage systems are ready for increased usage and potential rainfall. As we know, the holiday season often brings higher water usage due to cooking, cleaning, and gatherings, which can increase the risk of sewer backups. Heavy rainfall can further exacerbate drainage issues, raising the likelihood of both private and public sewer spills.

One issue that can lead to sewer backups and spills is the improper connection of sump pumps to the sewer system. Sanitary sewer pipes are designed to carry only sewage, not groundwater or rainwater. During wet weather, it's crucial to ensure that your sump pump and gutters are properly connected to a storm drain, not into your sewer lateral. Improper connections can cause blockages, backups, and spills, particularly when systems are under stress from heavy rainfall.

By ensuring that your sump pump and gutters are connected to the storm drain system, you help maintain the efficiency and integrity of both the sewer and stormwater systems. This simple action can protect the environment, reduce the risk of costly property damage repairs, and support the District's efforts to provide reliable service during the wet weather season.

Please note that the District does not manage storm drains. For questions regarding storm drain connections, please contact your local city or county public works department. Thank you for your continued cooperation in keeping our infrastructure functioning smoothly throughout the season. By following these steps, we can all contribute to a more effective and efficient wastewater management system. To learn more, please view the video [here](#).

We wish you a safe and warm holiday season!



Is Your Sump Pump Connected Properly?

Capital Improvement Program (CIP) Project Updates

Heatherwood & Heather Gardens Pump Station Rehabilitation Project



Heatherwood Storm Water Pump Station & Heather Gardens Lift Station 30

This month, we officially issued a Notice to Proceed to Disney Construction for the Heatherwood & Heather Gardens Pump Station Rehabilitation Project. Preliminary work and potholing are expected to begin in January 2025.

In collaboration with the City of Larkspur, this project will upgrade and enhance the infrastructure serving the Heather Gardens Lift Station (LS30) and the City of Larkspur's adjacent Heatherwood Stormwater Pump Station. The project involves demolishing the existing combined facilities and constructing separate pumping stations for sanitary sewer and stormwater management.

Key improvements include elevating critical electrical equipment above the FEMA 100-year flood elevation and installing new concrete wet wells, valve vaults, submersible pumps, backup power generators, and upgraded electrical controls and alarms that meet both District and City standards. The project will also address the risk of stormwater overflow into the sanitary sewer wet well. This project adapts to climate change by elevating system components above projected sea level rise elevations.

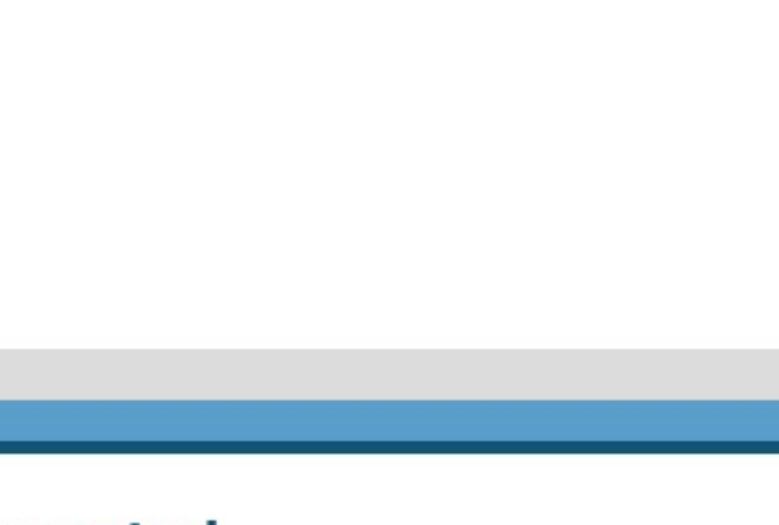
Currently, sandbags are used as a temporary measure to minimize inflow during large storm events. By separating the two functions and upgrading the equipment, this project will reduce the risk of sanitary sewer spills, improve system reliability, and enhance overall efficiency. We look forward to the successful completion of this critical initiative.

Visit the project [webpage](#) for more information and updates.

FY 23/24 Gravity Sewer Improvements Project

This capital project continues to progress smoothly and is nearing completion, with just a few punch list items remaining. We expect to finalize the project and complete the closeout by the end of January.

Visit the project [webpage](#) for more information and updates.



FY 23/24 Gravity Sewer Improvements Project Pipe Bursting

Lift Stations 20, 31 & 32 Improvements

Concrete work for the wet wells and valve vaults at LS31 and LS32 is ongoing. Electrical equipment is expected to arrive in mid-January. Work at LS20 will get underway in January.

LS31 and LS32 are on Riviera Circle at Via La Brisa and Corte Del Bayo, respectively, in the Larkspur Marina neighborhood. LS20 is in Larkspur Landing next to East Sir Francis Drake Blvd, and near the northbound 101 on-ramp.

The project will convert the lift stations to submersible pump configurations, saving maintenance and energy costs. The project also includes rehabilitating the two small force mains for the LS31 and LS32 lift stations (completed), new electrical control panels, communications equipment, and flow meters will improve the reliability of the lift stations and allow for faster response times to issues at each station.

Visit the project [webpage](#) for more information and updates.



Pump Station 32 Wet Well

Please remember, if you see a public sewer emergency such as a manhole overflow, leaking pipe, or sewage on the ground, **please call the RVSD Emergency Line 24/7 at 415-259-2949 as soon as possible.** When making an emergency call, be prepared to provide your name, phone number, and address where the incident occurs. After-hours calls will route to our on-call staff for immediate assistance.

Sincerely,

Steve Moore, General Manager

Stay Connected

nextdoor

RVSD is on Nextdoor. Subscribe to our page [here](#) as one of the ways you can find out if there will be construction in your neighborhood.

LinkedIn

We are also on LinkedIn! Follow our page [here](#) to stay up to date on current job announcements and other news about the District.

Public Meetings

The Ross Valley Sanitary District Board of Directors conducts monthly public meetings. The public is invited to attend these in-person meetings, held at our new Board Assembly Room:

Ross Valley Sanitary District
1111 Andersen Drive
San Rafael, 94901

The public can also attend the meeting remotely from a computer, tablet, or smartphone.

Ross Valley Sanitary District Board Meetings are typically held on the third Wednesday of each month at 5 p.m. For more information, please click [here](#) or contact the District's Board Clerk at 415-259-2949 or [clerk@rvsd.org](#).

The next RVSD Regular Board Meeting is scheduled for Wednesday, January 22, 2025.

Meeting Access

Agenda Posting

Want an alert when the next Board Meeting agenda is available?
Please write to our [Clerk of the Board](#) to request upcoming agenda alerts.

Sewer FAQs

Review our Frequently Asked Questions (FAQs) that explain sewer overflows, what to do if you see one, and other commonly asked questions about the sewer system.

Review FAQs

Before Hiring a Plumbing Contractor

Check the California Department of Consumer Affairs Contractors State License Board (CSLB) for more information. Make sure any plumber you hire is familiar with District policies and programs for any private property sewer emergency.

Learn More

[Home](#)

[Our Projects](#)

[Public Education](#)

[Contact Us](#)

Contact Us

Phone & Email
415-259-2949 (24/7)
Email: [info@rvsd.org](#)

Hours
Mon - Fri
7:30 a.m. - noon
1 p.m. - 4 p.m.

New Address
1111 Andersen Dr
San Rafael, CA 94901

